



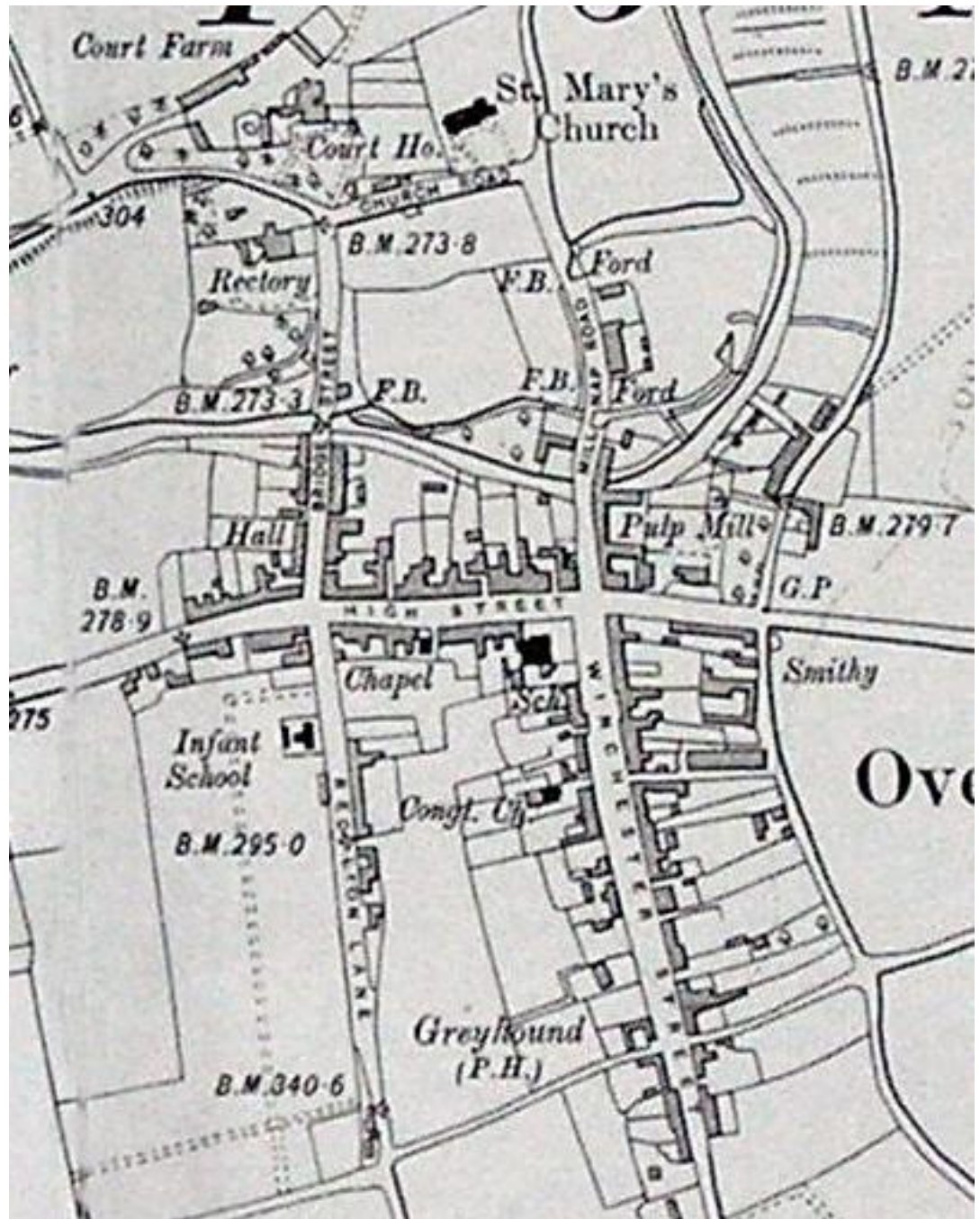
# Archaeological Test Pit Project

# **Why did we dig?**

**Our project was set up too see if we could find any evidence of medieval Overton in the ground.**

**Medieval, for us, is from the establishment of the Bishop of Winchester's 'new town' in the early 1200s to 1485**

**Where did  
we dig?  
In gardens  
in the heart  
of the  
village  
where  
properties  
existed at  
that time**



# What did we do?

Remove turf from 1m square



Dig down in 10cm intervals



**Record finds for each 10cm**



**Wash finds**



## Photograph finds



## Digging gets more difficult as go deeper



**Digging produces a lot of spoil**



**Dig until hit 'natural' – no more finds and just clay, chalk or gravel**



# Did we find anything medieval?

Yes, first find 60cm down in pit 1

Pottery with sharp inclusions





# But we found masses of other things

10-20 cm pit 3



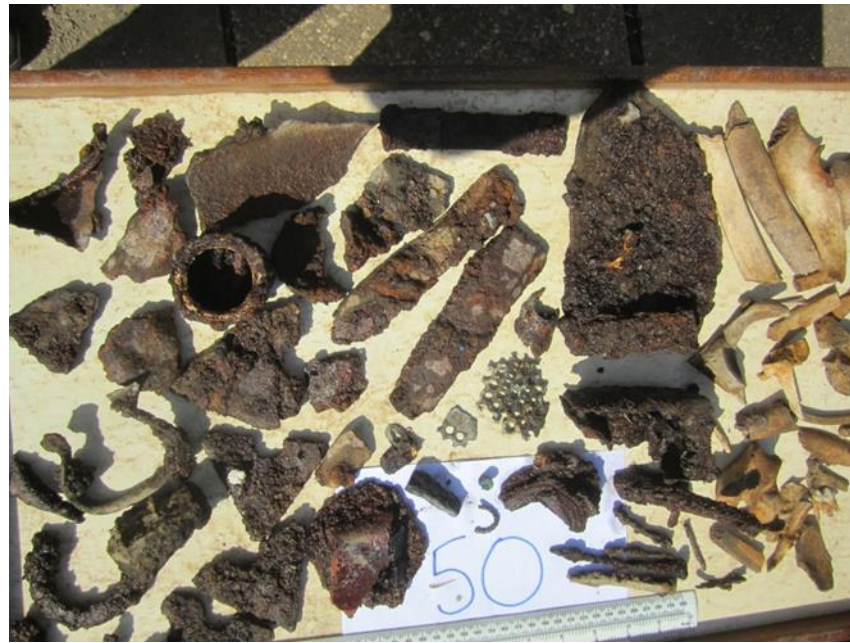
20-30cm pit 3



**Animal bones**



**Metal**



## China



## Pottery



# Commemorative china



## Glass



## Brick and tile



**In each pit we found pieces of clay tobacco pipe and occasionally a bowl**



# Clay tobacco pipe pieces



# Oyster and whelk shells





**To find out more, contact us at  
Heritage.overton@gmail.com**

